

TENTEC AERO WTP3 PUMP FOR WIND TURBINE TENSIONERS



The worldwide standard for wind turbine tensioner pumps.

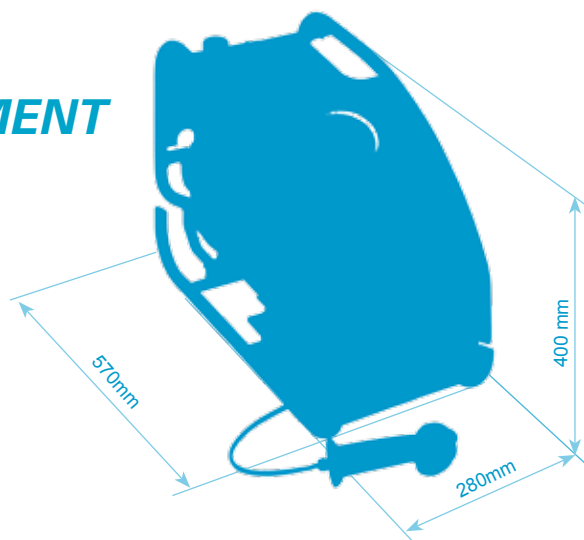
Atlas Copco



TENTEC W/T TENSIONER HYDRAULIC ANCILLARY EQUIPMENT

Tentec WTP3 Electric Driven Pump Unit

The Tentec Aero WTP3 is a self contained electric driven high pressure hydraulic pump unit that can generate pressures of up to 1500 bar. The unit is a perfect match with the Aero wind turbine range of Tentec bolt tensioning tools. One of the major features of the WTP3 Pump unit is the ability to totally remote control the pump from the controller hand grip. The WTP3 unit is designed to work in adverse environmental conditions, to ensure its durability the unit is certified to IP-56.



WTP3 - Available Power Supplies

HTT.8900.100	230v - 60Hz
HTT.8900.200	115v - 60Hz
HTT.8900.300	440v - 60Hz
HTT.8900.400	230v - 50Hz
HTT.8900.500	380v - 50Hz
HTT.8900.600	400v - 50Hz
HTT.8900.700	690v - 60Hz

Contact us to discuss alternative electrical configurations.

Oil Capacity

Total Oil Capacity = 4.7L
Usable Oil Capacity = 1.7L

Pressure

Max Pressure = 1500 bar (available in higher pressure configurations)



Oil Flow

Gear Pump = 3.9L/min / Pressure Intensifier = 0.195 L/min
Piston Pump = 1.1L/min / Pressure Intensifier = 0.06 L/min
Max Flow at Low Pressure (800 bar) = 0.25 L/min
Max Flow at High Pressure (over 800 bar) = 0.061 L/min

Controller Hand Grip

Ergonomic hand remote controller
Controlling functions:-

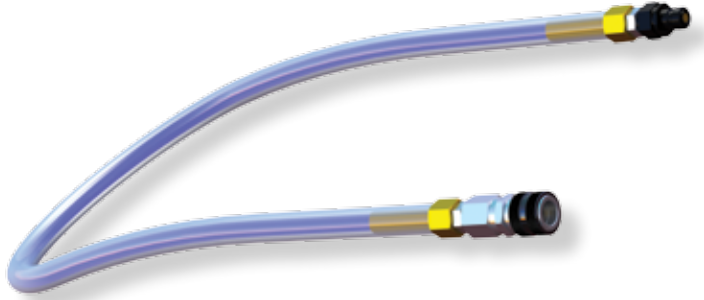
Start Up
Pressure Rise
Unit Stop
Pressure Relief
Emergency Pressure Relief Button.



Optionally available with hydraulic pressure display.

Tentec 1500bar Hydraulic Link Hose

The Tentec Link Hose system is the quick and easy way to connect multiple or single bolt tensioning tools to a power pack pump. The high quality flexible hose is fitted with suitable male and female quick release hydraulic connections that makes linking bolt tensioning tools a very rapid and intuitive task. Tentec Link Hoses are supplied in 1m, 1.3m, 1.5m, 2m, 2.5m & 3m lengths. Other lengths are available on request.



Features:

High pressure rating

Compact design

Unique patented sealing design

Non-Drip on connection and disconnection

Dust caps included as standard

Quick Release End Connections

Nominal flow dia.: 2.5 mm - 3/32"

Working pressure: 21750 PSI (1500 bar)

Connections: Female/male thread, with adapter

Material: Coupling: Black zinc plated steel

Nipple: Black zinc plated steel

Hose Specification

Working pressure: 21750 PSI (1500 bar)

Connections: Female thread swivel 1/4"BSP

Material: Four spiral layers of maximum tensile steel wire.

Cover: Polyamide, Blue

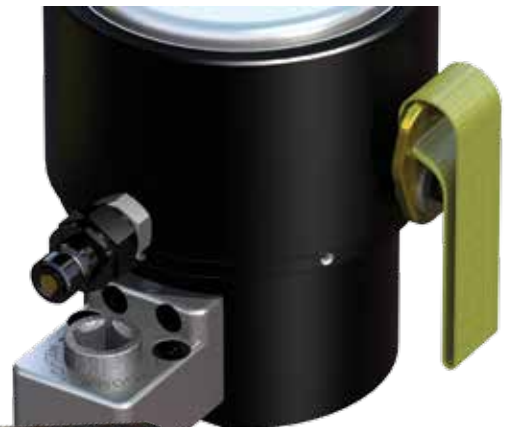
Min Bend Radius: 155mm

Temperature Range: -10°C to +70°C for water

Tentec WT Slip Wrench

The inclusion of a gear nut run-down mechanism on most of the Aero WT Tensioners offers a very rapid and consistent way of seating the hexagon nuts during the tensioning procedure.

We recommend the use of the WT Accessory pre-set torque slip wrench which prevents over-loading of the gear nut run down mechanism and hence prolonging the life of the gearbox.



Foundation bolt tensioning



Tower bolt tensioning



Foundation bolt tensioning

TENTEC BTS-BOLT TIGHTENING SOFTWARE

Tentec software allows users to manage and rapidly calculate bolt tensioner pressures. Tentec Bolt Load Software has been designed with the philosophy of minimal input, maximum output.

Documentation for multiple bolted joint projects can be created very quickly with minimal operator input. The software package contains data for all standard flanges along with the correct tensioner pressures to apply.



TENTEC BOLT TIGHTENING SOLUTIONS



ISO 14001



BS OHSAS 18001



ISO 9001



COMMITTED TO SUSTAINABLE PRODUCTIVITY

www.bolttighteningsolutions.com

Atlas Copco